

SKY RAINBOW

ALUMINIUM-PLASTIC COMPOSITE PANEL
Designer Series An Architect's Dream




SKYRAINBOW



**SKY
RAINBOW**



TH-119 Glittering Silver
PVDF/PE



TH-296 Silver
PVDF/PE



TH-120 Dark Silver Grey
PVDF/PE



TH-103 Moon-light Silver
PVDF/PE



TH-114 Champagne Silver
PVDF/PE



TH-199 Dark Champagne
PVDF/PE



TH-385 Silver Grey
PVDF/PE



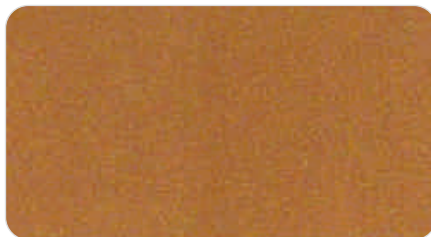
TH-250 Dark Grey Silver
PVDF/PE



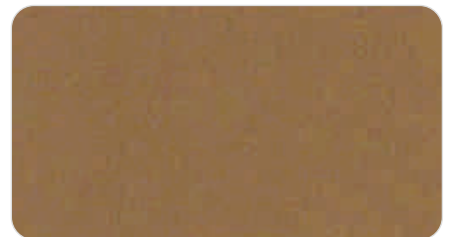
TH-146 Dark Pearl
PVDF/PE



TH-125 Golden
PVDF/PE



TH-106 Golden Brass
PVDF/PE



TH-183 Golden Champagne
PVDF/PE



TH-130 China Golden
PVDF/PE



TH-188 Bronze Color
PVDF/PE



TH-276 Red
FEVE



TH-107 Bright Red
PVDF/PE



TH-129 Purple Red
PVDF/PE

Designer Series An Architect's Dream
ALUMINIUM-PLASTIC COMPOSITE PANEL



TH-117 Pure White
PVDF/PE



TH-113 Dark White
PVDF/PE



TH-118 Ivory White
PVDF/PE



TH-442 Milk White
PVDF/PE



TH-121 Pure Yellow
PVDF/PE



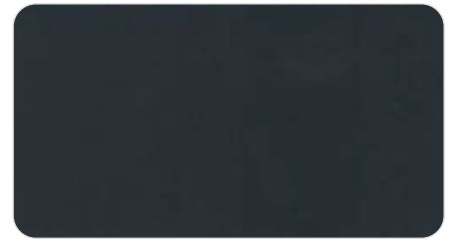
TH-020 Black
PVDF/PE



TH-115 Rat Grey
PVDF/PE



TH-175 Light Grey
PVDF/PE



TH-375 Dark Grey
PVDF/PE



TH-134 Telecom Blue
PVDF/PE



TH-116 Blue CTNBANK
PVDF/PE



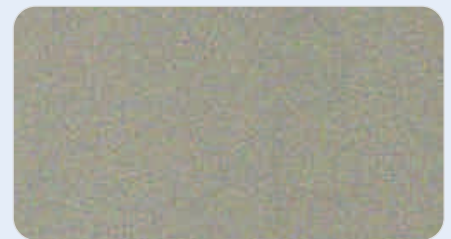
TH-111 Post Green
PVDF/PE

**SKY
RAINBOW**

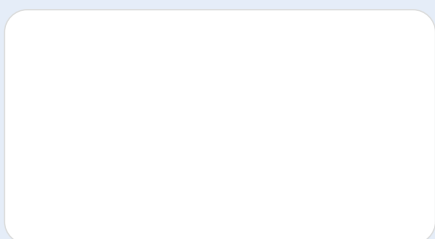
Nano PVDF Technology colour



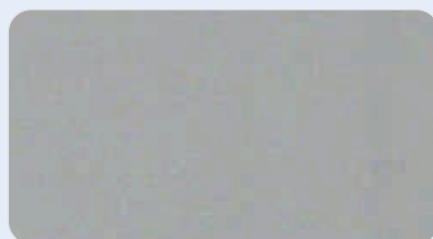
TH-819 Glittering Silver
Nano PVDF



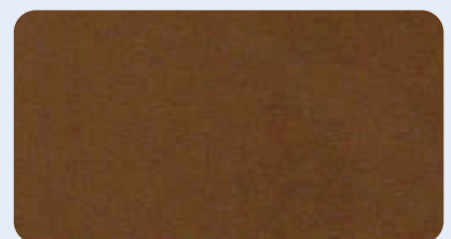
TH-814 Champagne Silver
Nano PVDF



TH-817 Pure White
Nano PVDF



TH-820 Dark Silver Grey
Nano PVDF



TH-821 Gloss Rose Golden
Nano PVDF

Designer Series An Architect's Dream
ALUMINIUM-PLASTIC COMPOSITE PANEL



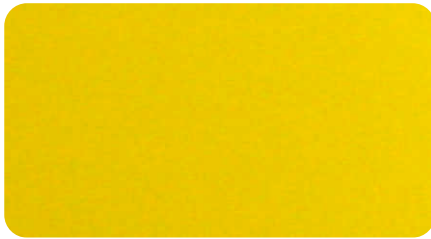
9016 Gloss White
PE



1015 Gloss White Ivory
PE



9006 Gloss Silver
PE



1023 Gloss Traffic Yellow
PE



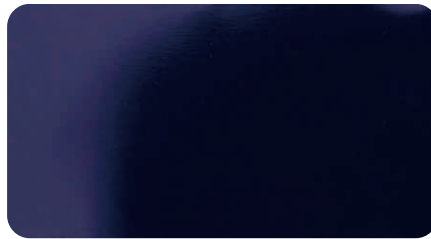
6024 Gloss Traffic Green
PE



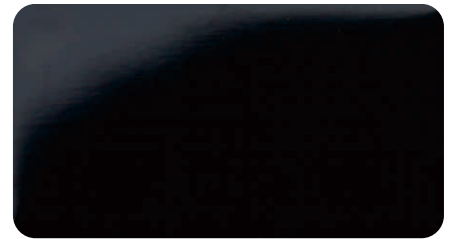
6005 Gloss Green
PE



5002 Gloss Light Blue
PE



5022 Gloss Blue
PE



9005 Gloss Jet Black
PE



2004 Gloss Orange
PE



3020 Gloss Traffic Red
PE



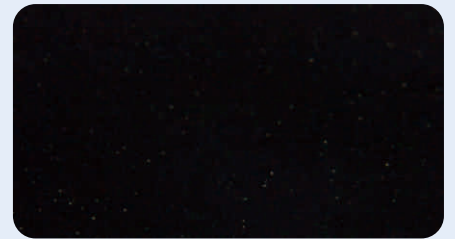
3004 Gloss Purple Coffee
PE

**SKY
RAINBOW**

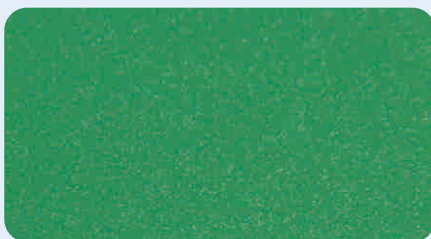
Special Colour



TH-483 Pearl Red
PE



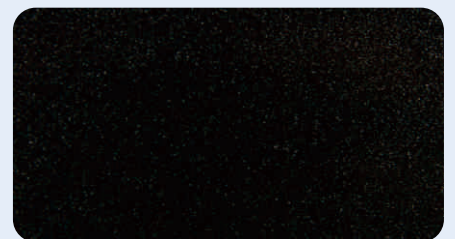
TH-555 Diamond Black
PE



TH-486 Pearl Green
PE



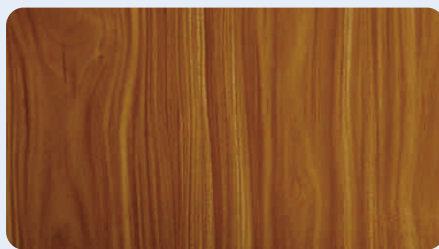
TH-484 Pearl Blue
PE



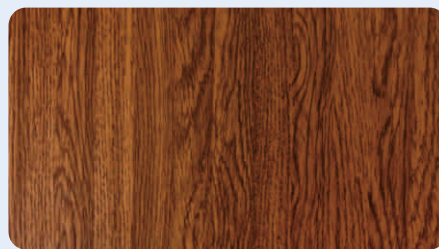
TH-485 Pearl Black
PE

SKY RAINBOW

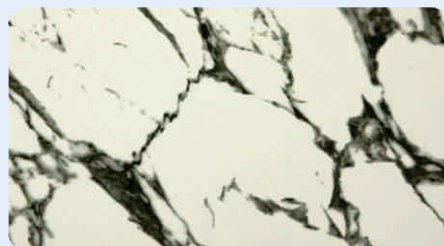
Granite & Wood Grain



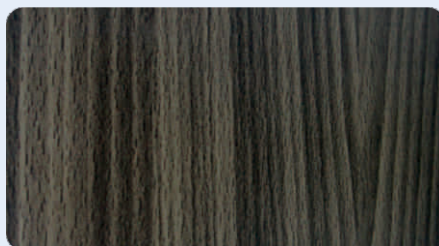
TH-432 Dark teak
PVDF/PE



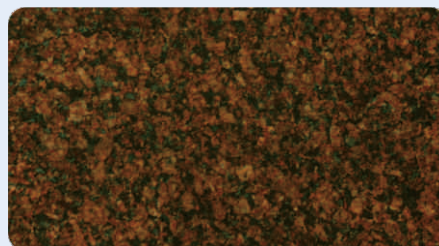
TH-279 Light Walnut
PVDF/PE



TH-480 Oriental White
PVDF/PE



TH-299 Dark Coffee Vein
PVDF/PE



TH-479 Western Red
PVDF/PE

SKY RAINBOW

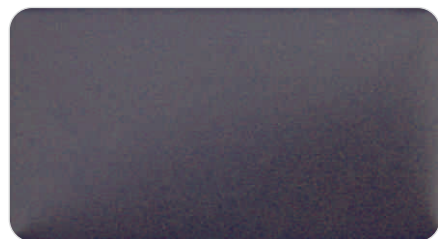
Spectral Colour



TH-547 Cupral913
PVDF/PE



TH-549 Jewel909
PVDF/PE



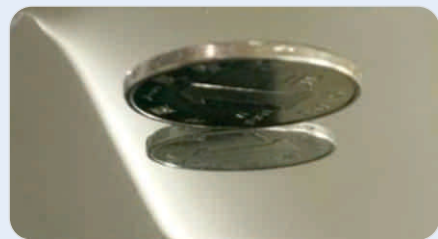
TH-550 Sunset910
PVDF/PE



TH-548 Saura917
PVDF/PE



TH-540 Autum915
PVDF/PE



TH-301 Silver Mirror
Anodized



TH-302 Gold Mirror
Anodized



TH-539 Hammerton Nature
Anodized



TH-401 Silver Brushed
PE



TH-402 Gold Brushed
PE



TH-404 Steel Brushed
Anodized

Test Item	Performance requirement (AAMA2605-05)	BeckryFlour Test Results
Gloss ASTM D523@60° C	Low Normal High	Gloss range(25-35 unit)
Pencil hardness ASTM D3363	>=F	Pass
Grinding Test (1mm)		
1) Dry film (AAMA 2605-05 7.4.1.1)	Adhesive attraction 100%	Excellent, no change
2) Wet film (AAMA 2605-05 7.4.1.2)	Adhesive attraction 100%	Excellent, no change
3) Pochieren(AAMA 2605-05 7.4.1.3)	Adhesive attraction 100%	Excellent, no change
Backside Impact (AAMA 2605-05 7.5.1)	No Crack , Adhesive attraction 100% @ 3mm ± 0.3mm	Excellent, no change
Abrasion Resistance Test(AAMA D968)	40kgs/25 μ m	Pass or Surpass
Chemical Resistance		
1) Hydrochloric Acid(AAMA 2605-05 7.7.1)	No bubble, no change by eye	Pass or Surpass
2) Cement(AAMA 2605-05 7.7.2)	No change	Pass or Surpass
3) Nitric Acid (AAMA 2605-05 7.7.3)	ΔE<5	Pass or Surpass
4) Detergent(AAMA 2605-05 7.7.4)	No change	Pass or Surpass
5) Window Detergent(AAMA 2605-05 7.7.5)	No change	Pass or Surpass
Corrosion Resistance		
1) Moisture test,400hrs x100% RH x 38°C (ASTM D2247 or ASTM D4585)	Hardly bubble,see No.8 (ASTM D714)	Pass or Surpass
2) Salt spray test,400hrs x 5% NaCl (ASTM B117)	Average side corrosion 7 Grade, Bubble 8 Grade (ASTM D1654)	Pass or Surpass
Weather Resistance(Florida, 10 years)		
1) Aberration(ASTM D2244)	ΔE<=5	Pass or Surpass
2)Pulverization(ASTM D4214)	≤8 Grade	Pass or Surpass
3)Gloss retention rate (ASTM D523)	≥50%	Pass or Surpass
4)Corrosion(ASTM B244)	Paint film drop <10%	Pass or Surpass

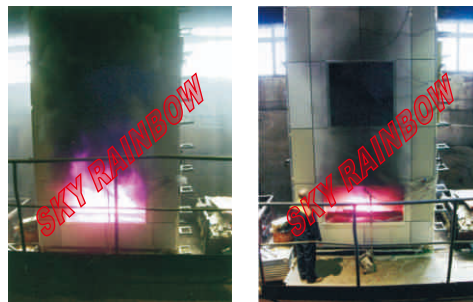
The above product description is the test results of prudence laboratory. In view of different practical operation and application conditions, we will not guarantee the special performance of the list and take the legal responsibility. We suggest the user take the test and evaluation before using.



Jiangyin Tianhong Decoration Material Co., Ltd. apply high quality materials in Kynar 500 paints from Becker or PPG, Hylar 5000 paints from Soltex Plymer Co. Treating technique of Henkel Coating Formation from Germany, Self-Produced Adhesive Film used DUPONT-Bynel Resins, through World advanced Cleaning Line, Coating Production Line and Continuous Lamination Line, under the ISO9001-2000 certifying quality management system, to produce high quality of **SKYRAINBOW** Aluminium Composite Panel, also with the high technology advanced test machine to keep **SKYRAINBOW** Aluminium Composite Panel in stable and excellent quality, all of the advantage make series of **SKYRAINBOW** Aluminium Composite Panel pass the ASTM Standard and GB/T17748-1999 in excellent quality.

Fire-Resistance Aluminium Composite Panel

We use Magnesium hydroxide $Mg(OH)_2$ as the main Fire-Resistance materials, which is halogen free, it doesn't happen Dioxin gas in case of fire, when the fire temperature reach $330^{\circ}C$, the react equation is: $Mg(OH)_2 = MgO + H_2O$ so after the reaction, the water (H_2O) will cool PE, and metallic oxide. The MgO has the function as the Fire-Resistance and Flame-Resistance, can reduce and avoid the toxic gas, besides, the $Mg(OH)_2$ can prolong the time of the materials burning time. So it will be deduct the quantity and the speed of smoke and flame. SO our Fire-Resistance panel have excellent fire-resistance feature, the fire-resistance function have psased BS476 Part6 & Part7 in highest Grade - Class 0.

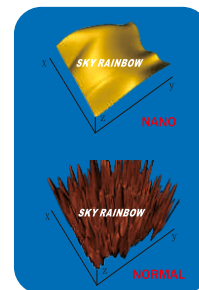


Nanometer Grade PVDF Aluminium Composite Panel:

NANOMETER grade coating is an additional coating based on high-tech paints, Because Nanometer Coating reaches the Nanometer Grade, and also the coating layer is transparent, for this that don't destroy the feature of PVDF coating. When it is applied for every **SKYRAINBOW** PVDF colors. Its outstanding function is Self-Cleaning, Anti-Graffiti, Anti-Scratch, Anti-Abrasion, Anti-Salt, Anti-Moisture and UV-resistance, weather Resistance. In image, it will be much more shiny than normal PVDF coating. So it will make your building shinier, brighter, and cleaner and reduce the maintenance cost too.



Under the Microscope, the atom arrange picture between Nano panel and normal panel:



High Gloss Aluminium Composite Panel in Polyester (PE) Coating:

High Gloss PE coated ACP is around $95^{\circ}C$, this kind of High Gloss Panel is applied specially in Advertisement fields, i.e. Sign Board, Screen Printing, and Digital Printing, large advertisement Jet, Advertisement Engraving and also available in shop front. Kitchen cabinets, tunnel and subway interiors, Ceilings, eaves, galleries, balconies, partitions and interior decorations, Telephone booths, vehicle bodies, yachts, industrial usage.





JIANGYIN TIANHONG DECORATION MATERIAL CO.,LTD.

[Http://www.sky-rainbow.com](http://www.sky-rainbow.com)

E-mail:info@sky-rainbow.com